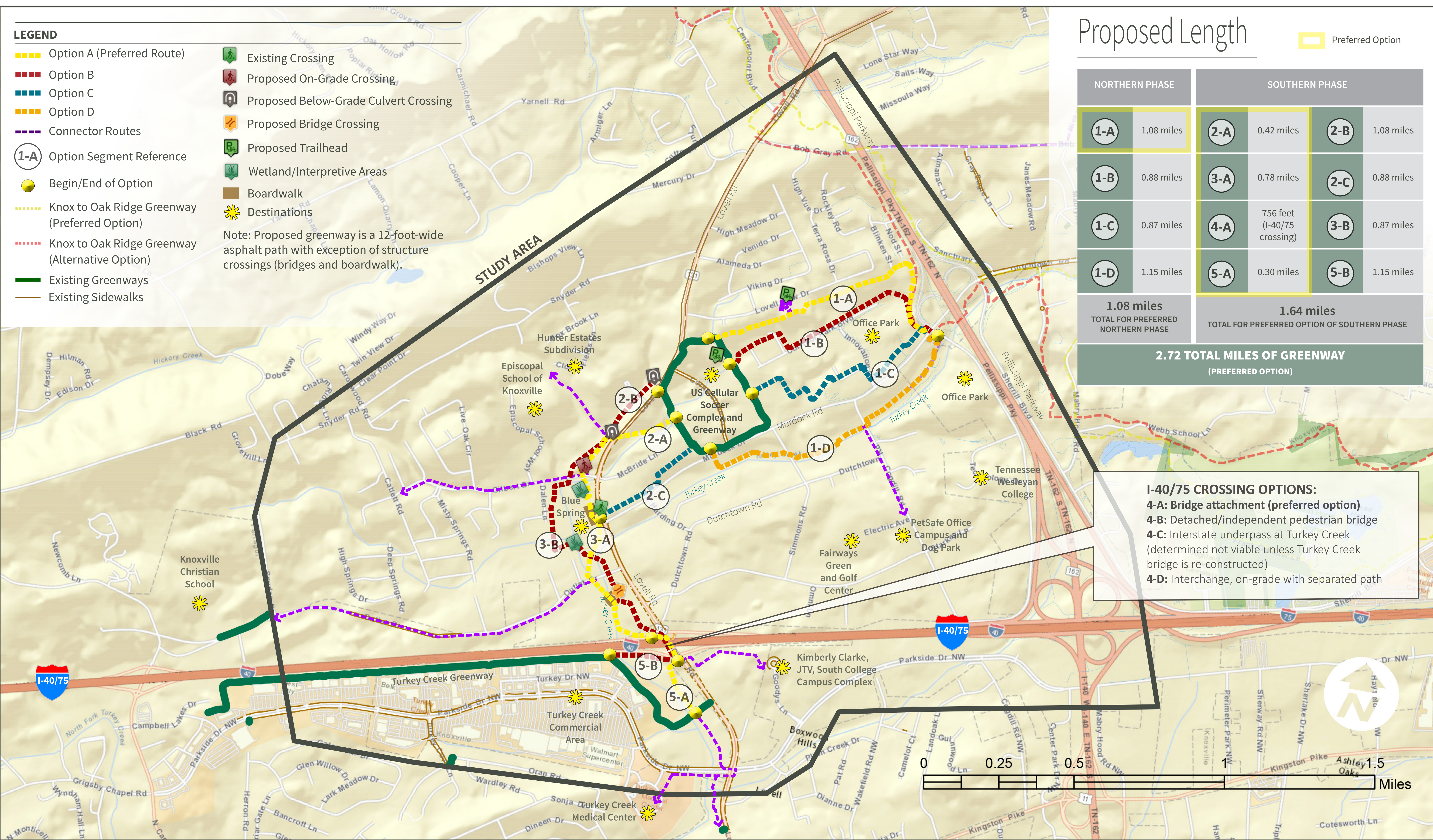


LEGEND

- Option A (Preferred Route)
- Option B
- Option C
- Option D
- Connector Routes
- 1-A Option Segment Reference
- Begin/End of Option
- Knox to Oak Ridge Greenway (Preferred Option)
- Knox to Oak Ridge Greenway (Alternative Option)
- Existing Greenways
- Existing Sidewalks
- Existing Crossing
- Proposed On-Grade Crossing
- Proposed Below-Grade Culvert Crossing
- Proposed Bridge Crossing
- Proposed Trailhead
- Wetland/Interpretive Areas
- Boardwalk
- ★ Destinations

Note: Proposed greenway is a 12-foot-wide asphalt path with exception of structure crossings (bridges and boardwalk).



Proposed Length

Preferred Option

| NORTHERN PHASE | | SOUTHERN PHASE | | | |
|---|------------|---|-----------------------------|---|------------|
| 1-A | 1.08 miles | 2-A | 0.42 miles | 2-B | 1.08 miles |
| 1-B | 0.88 miles | 3-A | 0.78 miles | 2-C | 0.88 miles |
| 1-C | 0.87 miles | 4-A | 756 feet (I-40/75 crossing) | 3-B | 0.87 miles |
| 1-D | 1.15 miles | 5-A | 0.30 miles | 5-B | 1.15 miles |
| 1.08 miles TOTAL FOR PREFERRED NORTHERN PHASE | | 1.64 miles TOTAL FOR PREFERRED OPTION OF SOUTHERN PHASE | | | |
| 2.72 TOTAL MILES OF GREENWAY (PREFERRED OPTION) | | | | | |

I-40/75 CROSSING OPTIONS:
4-A: Bridge attachment (preferred option)
4-B: Detached/independent pedestrian bridge
4-C: Interstate underpass at Turkey Creek
 (determined not viable unless Turkey Creek bridge is re-constructed)
4-D: Interchange, on-grade with separated path

Turkey Creek Greenway

Conceptual Plan With Corridor Options

