

Item 6

Update on the Urban Area Boundary from the 2020 Census

PRESENTER: MIKE CONGER, TPO STAFF

Background on Census Bureau 2020 Decennial Urban Area Delineation

Primary Criteria:

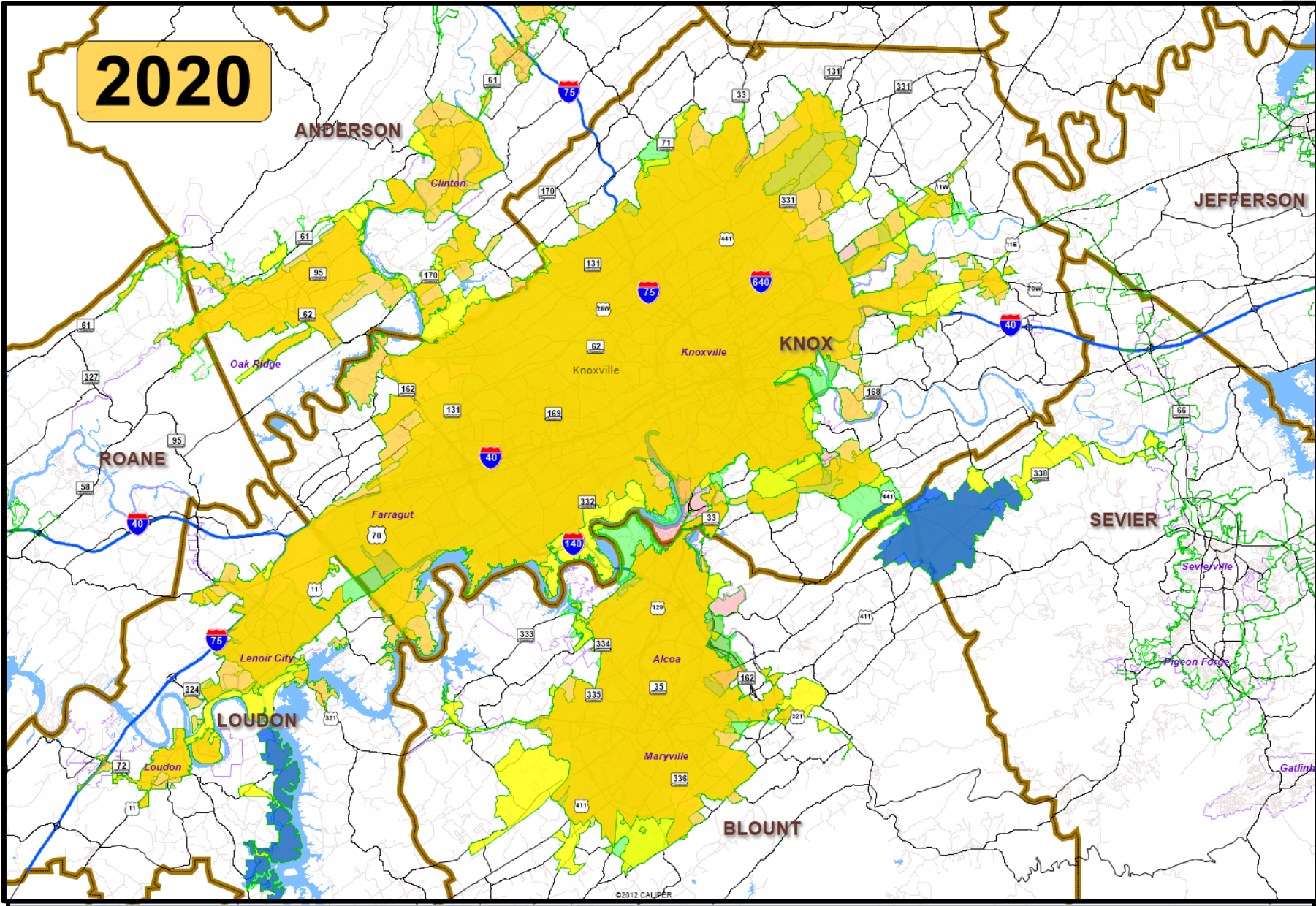
- Census Block Housing Unit Density
 - Core – 425 HU/square mile
 - Low Density Adjacent Territories – 200 HU/square mile
- Impervious Land Cover

Changes to Criteria from 2010 to 2020:

- Using housing unit density in place of population density
- Reduction of “Jump” distance from 2.5 miles to 1.5 miles
- No longer include noncontiguous territory from hops and jumps (disconnected pieces)
- Raising minimum threshold for qualification as urban area to 2,000 housing units or at least 5,000 people from previous minimum of 2,500 people

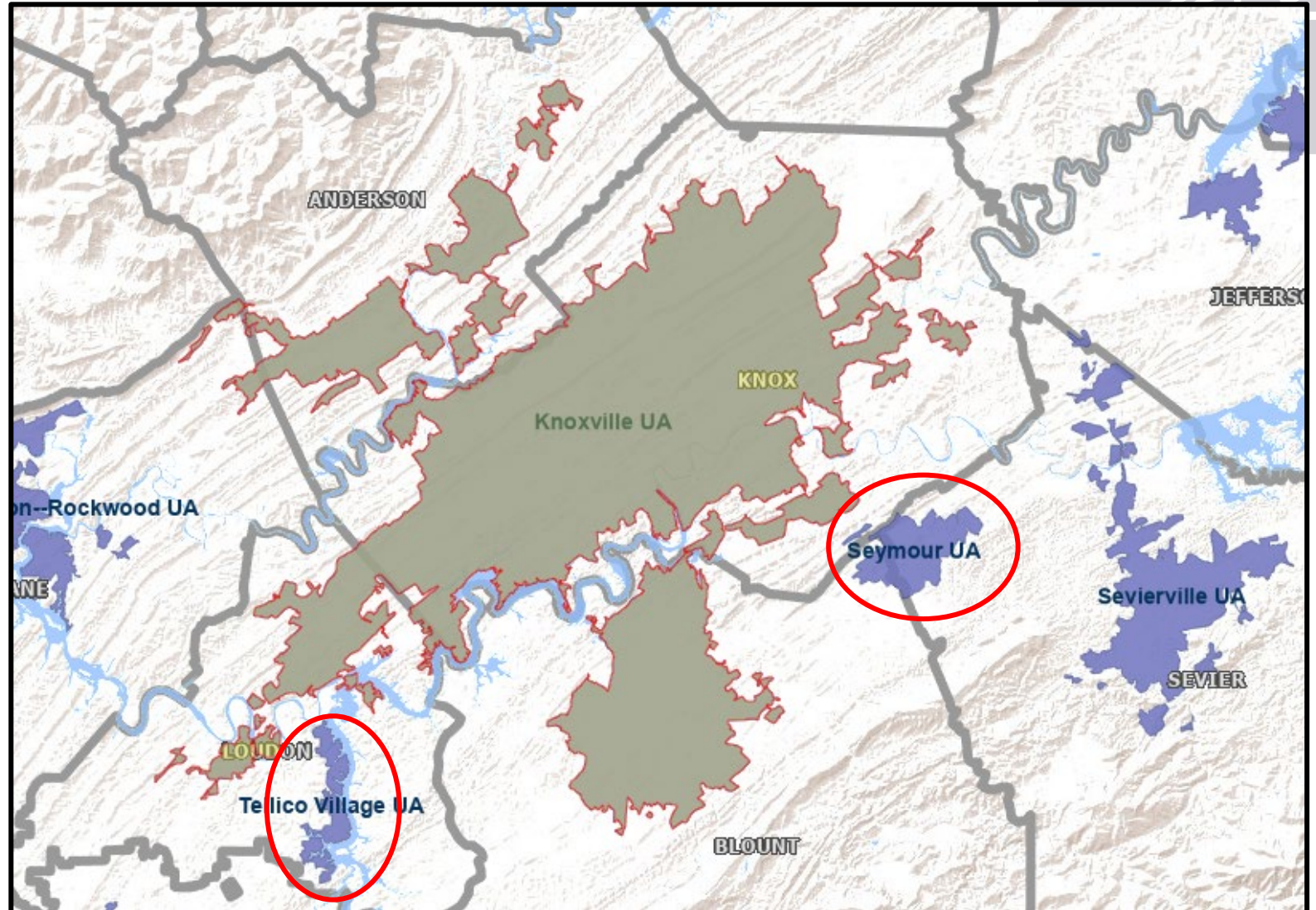


Knoxville Urban Area 1990 - 2020



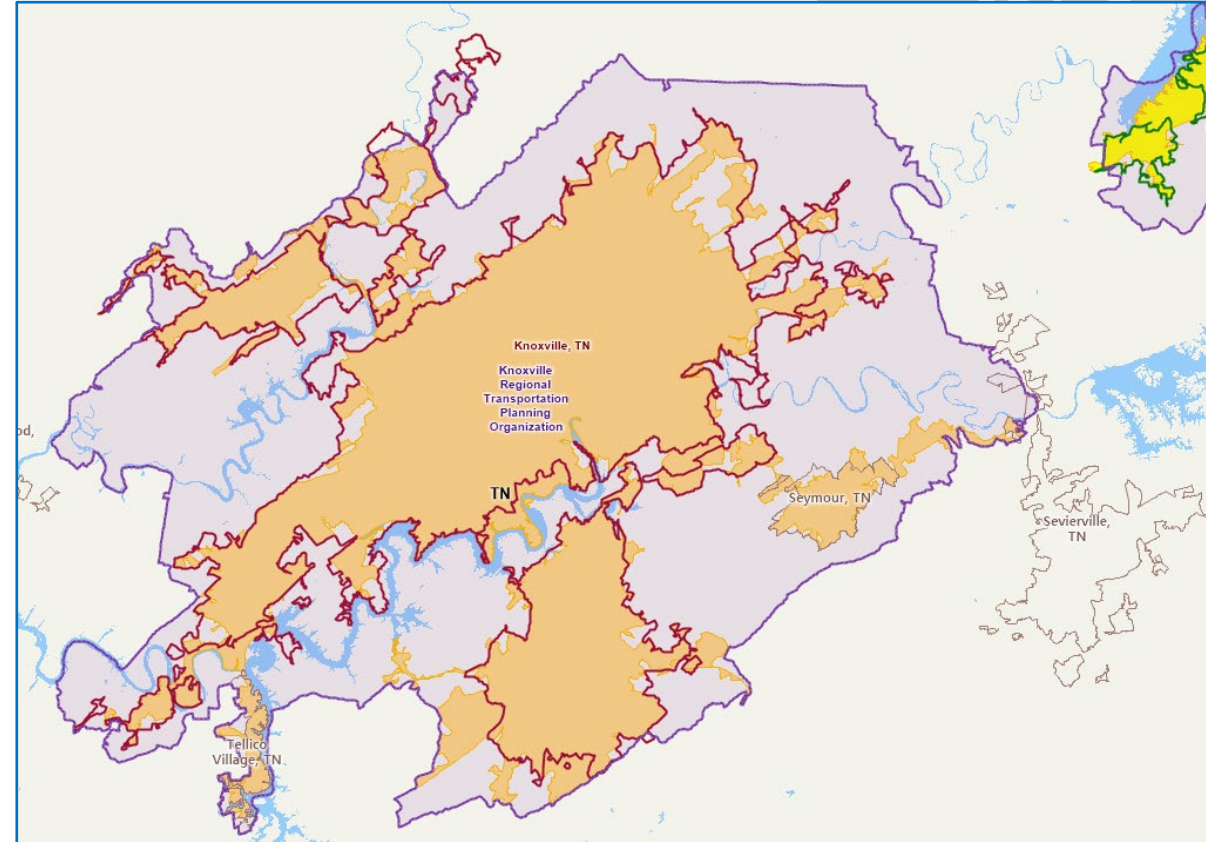
Knoxville 2020 Urban Area Map

- Net reduction of just over 10 square miles between 2010 and 2020 UA.
- Loss of Seymour (pop. 15,219) and Tellico Village (pop. 7,156) which became independent UA's.
- Population increase from 558,696 to 597,257



2020 Urban Area – TPO Impacts

- Two Major Implications of Each Decennial Census Urban Area Designation:
 - Base Urban Area sets the population to be used in federal formula fund allocations for both roadways and transit
 - TPO must include all of urban area in its Planning Area Boundary
- Two-step Process to Delineate New TPO Planning Area:
 - 1st Step is to establish an “Adjusted (Smoothed) Urbanized Area” in coordination with TDOT
 - 2nd Step is to establish the Metropolitan Planning Area (MPA) Boundary – First time since 1990 that our urban area did not expand to take in new jurisdictions
- Need to discuss pros and cons of continued inclusion of Seymour and Tellico Village in MPA
- Detailed Timeline will be forthcoming – no immediate deadline but will want to establish new MPA for development of Mobility Plan update



Questions or comments?

Contact:
mike.conger@knoxtpo.org
865.215.3813