

# Item 7 – TDOT Proposed FY 2021 Resurfacing List

Presenter: Michelle Christian, TDOT Staff  
- Presentation Slides





# Resurfacing Coordination

Michelle Christian, TDOT Office of Community Transportation

First Tennessee RPO Meeting  
Spring 2020

# Resurfacing Coordination

## Historically

- Municipalities were contacted regarding resurfacing with limited time to respond.
- TDOT did not consistently request local input, apart from utility coordination.
- TDOT only changed striping and markings to incorporate new safety standards.

## Currently

- TDOT will publish the current and proposed lists on our website the summer prior to the projects.
- TDOT will communicate with each jurisdiction on the Resurfacing list.
- TDOT will consider changes to be included in the project.



# Outreach Process - Website

- Lists are finalized summer of the prior year (ie. 2021 paving projects are finalized in summer 2020)
- Proposed and final paving lists are made available online:  
<https://www.tn.gov/tdot/maintenance/pavement-office/future-paving-projects.html>

## Future Paving Projects

In an effort to maintain open communication with the driving public, other TDOT offices, municipalities, metropolitan planning organizations (MPOs), and rural planning organizations (RPOs); the TDOT Pavement Office maintains a list of all proposed pavement resurfacing projects. The most recent draft paving list is available below. Any questions or comments can be submitted to the [state pavement engineer](#). New lists, once finalized, are estimated to be made available each Summer.

This list are subject to change. The Department reserves the right to postpone, expedite or remove projects at any time. Additional projects listed separately as “additional” or “extra” are developed for 2020 in the event that projects on the primary list get postponed and funding becomes available. Otherwise, all projects on the additional/extra list and KML are expected to be paved in 2021.

[Proposed 2021 TDOT Resurfacing Program – Regions 1 and 3](#) 

[2021 Resurfacing List – Regions 1 and 3](#) (KMZ)

[Proposed 2020 TDOT Resurfacing Program](#) (8/16/2019)

[2020 Resurfacing List \(Google Earth map\)](#) (KMZ)

# Outreach Process – Individual Communications

TDOT's Office of Community Transportation (OCT) will send letters to **each jurisdiction on the final list**.

- The letters will contain:
  - the State Route
  - Type of resurfacing
  - Beginning and ending termini
  - Map
  - Deadline to make changes

*Please forward the letter to anyone else who needs to know: Utilities, Bike/Ped coordinators, planners, etc.*

*OCT will copy TDOT's Multimodal Division, Resurfacing Coordinators, and RPO Coordinators on each correspondence.*

Dear \_\_\_\_\_,

As you may know, TDOT has now started a three-year plan for all resurfacing projects across the state. By doing this, TDOT hopes to be more transparent by keeping local communities up-to-date about planned improvements. As of now, the 2020 Resurfacing List is available, with the 2021 and 2022 lists being available later this year. Moving forward, there will be three years of plans on TDOT's website: <https://www.tn.gov/tdot/maintenance/pavement-office/future-paving-projects.html>

We are reaching out to you specifically, as there are three projects within your jurisdiction, see details and maps below. We would like to ascertain whether you have any restriping requests or other projects planned that we would need to coordinate on. Curb ramps will be updated along the state route (if applicable), so consider crosswalk stripping, bike lanes, or any other potential alterations to the current configuration. If you have any projects, adjustments, or changes that you may want to discuss, please reach out to us; we would like to have requests as soon as possible but no later than October 1, 2019.

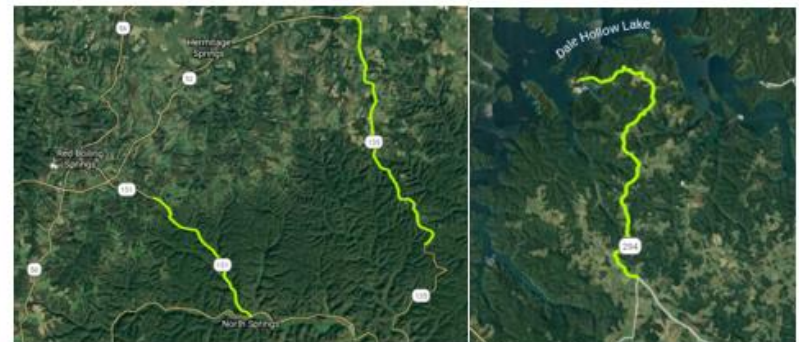
Please forward this correspondence to any internal staff that needs to know about the resurfacing projects.

Thanks so much for your time,

Office of Community Transportation-Region 2,

Stacy Morrison and Andrea Noel

Clay	SR-135	Scrub Seal	From Jackson County Line to SR-62	0.00	8.43	8.43	16.86
Clay	SR-151	Scrub Seal	From Clay County Line to Mason County Line	0.00	1.13	1.13	2.26
Clay	SR-294	Micro-surfacing @ 22 Bkly	From Overton County Line to Willow Grove Road	0.00	7.55	7.55	15.10





# What are the possibilities?

- Bike Lanes and Buffers (Delineators)
- Crosswalk Enhancements
- Road Reconfigurations and Road Diets
- Rumble Stripes and Strips
- Coordination on Utilities



# What are the possibilities?

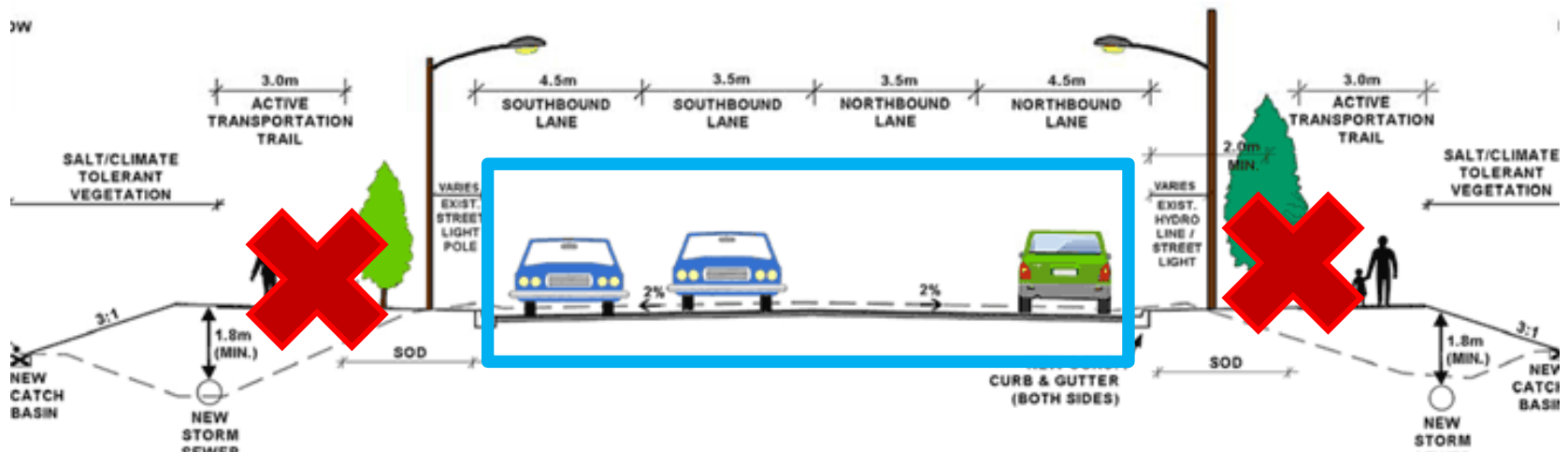
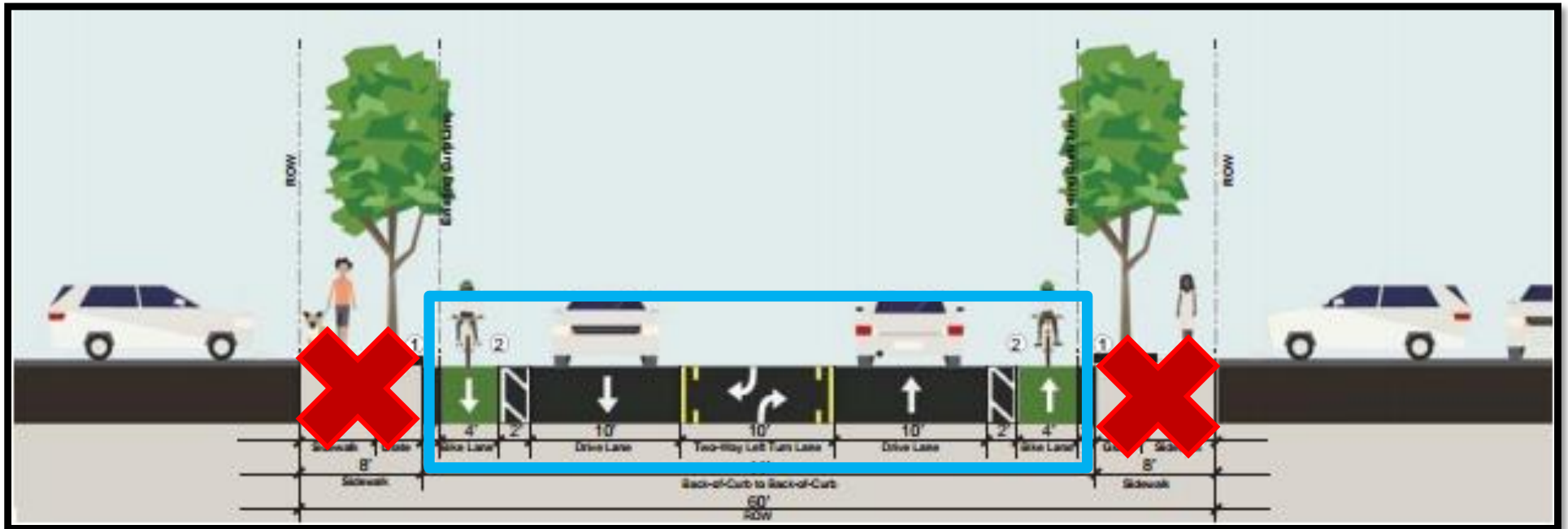
## Keep in mind...

- Some requests may require cost sharing from the jurisdiction.
- In some cases, stamped engineering drawings may be required.
- All change requests need to be approved by the Regional Traffic Engineers at least 21 weeks prior to letting dates; so it is important to initiate coordination as soon as possible.
- All change requests must meet standards/guidelines to be approved.
- Changes are only made from “curb to curb” or more accurately “edge of pavement, to edge of pavement”.

\*The exception- TDOT will update existing curb ramps to make them PROWAG compliant.

(Public Right of Way Accessibility Guidelines)

# Curb to Curb





# Bike Lanes and Buffers

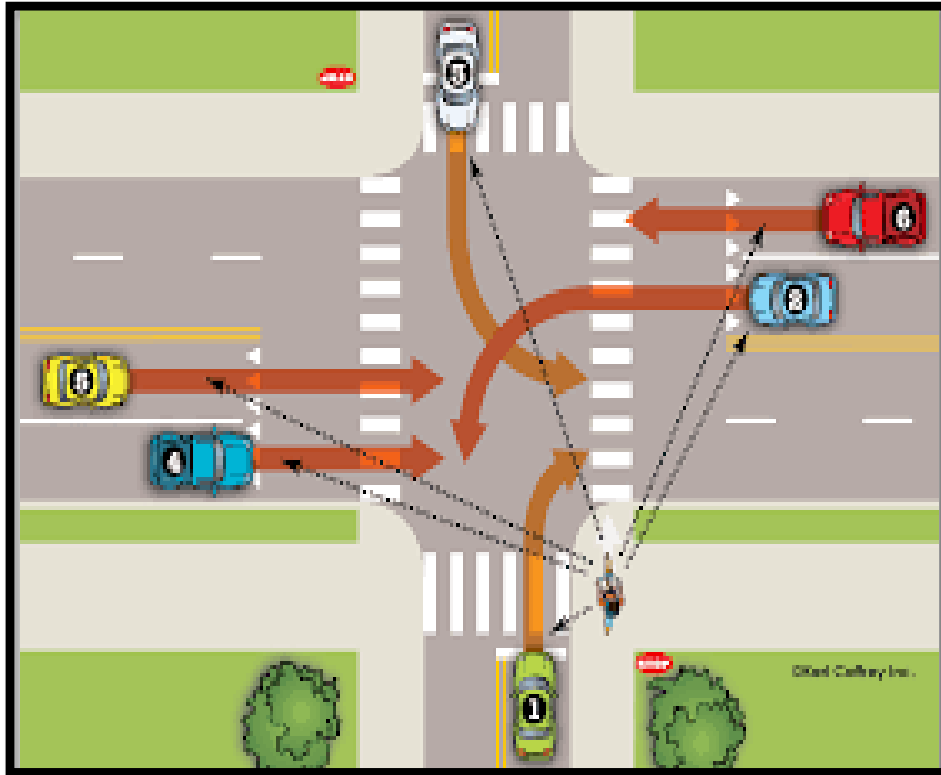
- Efficient and cost-effective
- Utilize existing shoulder, striping and signage.
- Follow all TDOT and MUTCD requirements.
- Account for Bike Level of Service and current routes.
- Only appropriate in areas with high potential for bicycle traffic.
- Bike and Pedestrian Plan is strongly encouraged to support this request.

Dunlap SR-28



# Crosswalk Enhancements

TDOT updates existing curb ramps to be PROWAG compliant. The existing type of crosswalk stripe will be replaced in kind unless otherwise requested or mandated by MUTCD or TDOT.



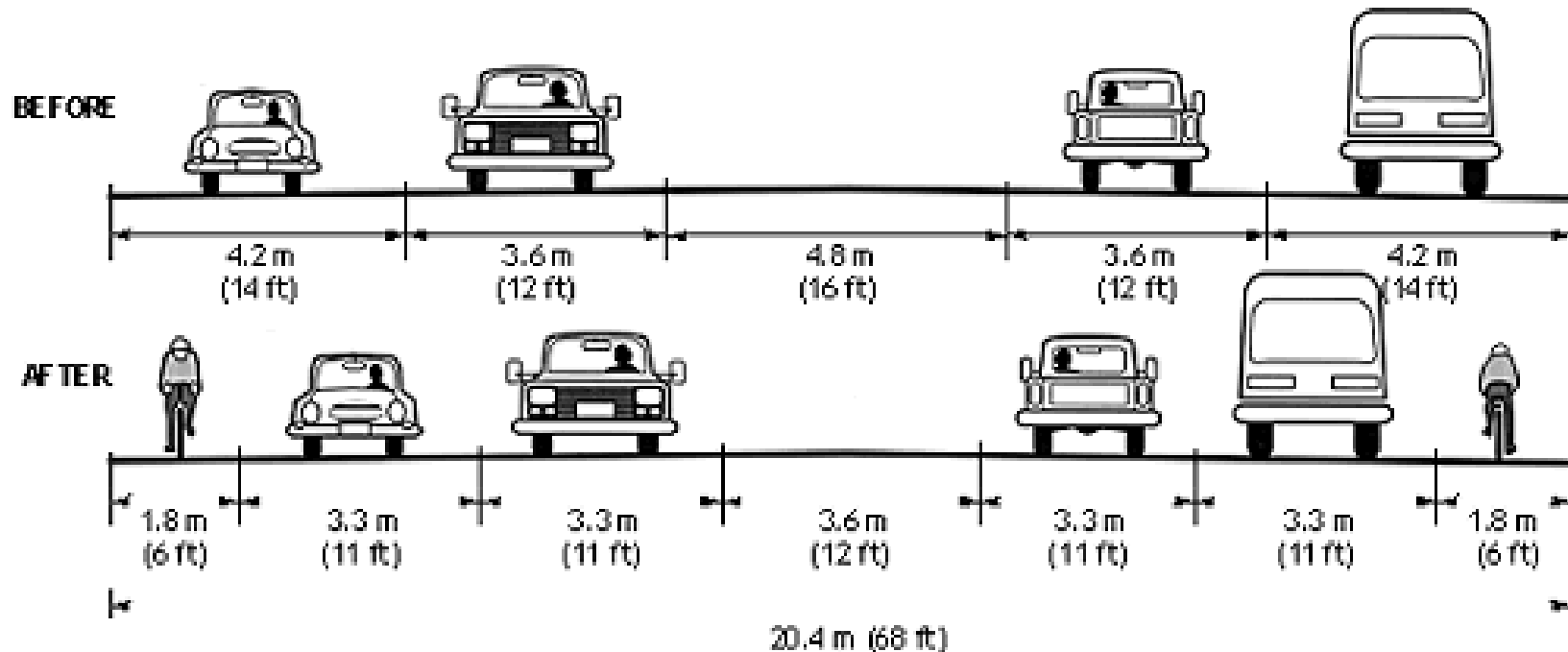
# Road Reconfiguration

Primarily used when you do not want to reduce the NUMBER of lanes, rather the WIDTH of lanes. (to add a bike lane, if it meets the guidelines).

Travel Lane Widths (ft)					
Context / Roadway	Rural	Rural (Town)	Suburban	Urban	Urban (Core)
Principal Arterial	11 to 12	11 to 12	11 to 12	10 to 12	10 to 12
Minor Arterial	11 to 12	10 to 12	10 to 12	10 to 12	10 to 12
Collector	11 to 12	10 to 12	10 to 12	10 to 12	10 to 12
Local	9 to 12	9 to 12	9 to 12	10 to 12	9 to 12

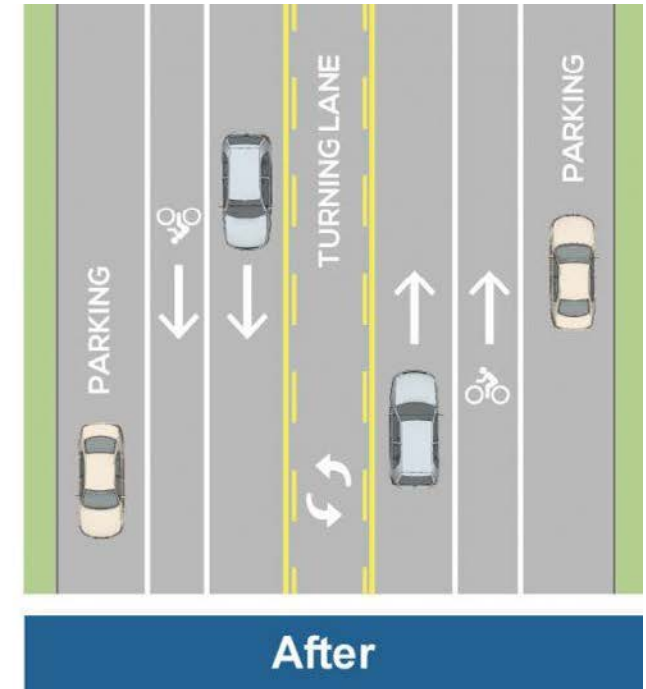
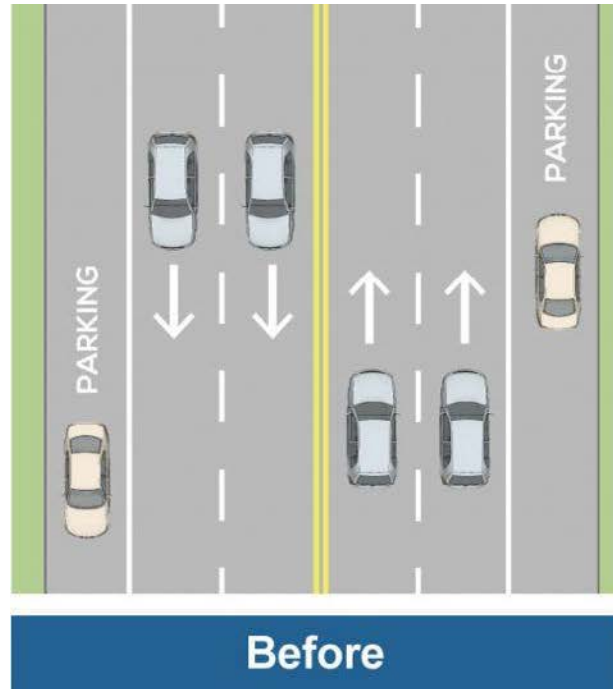
- Minimum 11-foot lanes are required for design speeds of 45 mph or greater. The values assume rural areas have design speeds of 45 mph or greater, except on local streets.
- Curbside lanes with fixed-route transit service should be 11 feet wide (min.).

Table 9-6: Travel Lane Width Range by Context and Functional Classification



# Road Diet

- Typically involves converting an existing four-lane, undivided roadway segment to a three-lane segment consisting of two through lanes and a center, two-way left-turn lane.
- Can reduce cross-lane accidents.
- Can provide bicycle lanes where there is not currently enough room.



\*Requires additional study for roads greater than 10k AADT

# Resources

*If you have questions about appropriateness of bike lanes, road diets, road reconfigurations; please email:*

[TDOT.MultimodalPlanning@tn.gov](mailto:TDOT.MultimodalPlanning@tn.gov)

Or visit the website:  
<https://www.tn.gov/tdot/multimodal-transportation-resources/bicycle-and-pedestrian-program.html>

The screenshot shows the TDOT Department of Transportation website. The header includes the TN logo, the text 'TDOT Department of Transportation', a search bar, and navigation links like 'Go to TN.gov', 'Driver how do I...', 'Business how do I...', 'Government how do I...', 'Find Local Information', 'Find IMPROVE Act Projects', 'Sitemap', and 'Index of Services'. The main content area is titled 'Bicycle and Pedestrian Program' under the 'Multimodal Transportation Resources Division'. It features a sidebar with links to 'Office of Public Transportation', 'Bicycle and Pedestrian Program', 'Tennessee Bicycle Laws', 'Tennessee Pedestrian Laws', 'Bicycle Routes', 'Smart Commute', 'Multimodal Access Grant', 'Annual and Final Report', and 'Staff'. The main text describes the importance of sidewalks, bikeways, and paths for transportation choices, especially for vulnerable groups. It also mentions the benefits of walking and cycling for communities, such as attracting businesses and improving air quality. A list of goals includes small towns, quiet rural roads, beautiful state parks, and historic trails. At the bottom, there is a 'Useful links' section with various resources like the 'TDOT Bike Ped Plan', 'TDOT Multimodal Access Policy', 'TDOT Multimodal Project Scoping Manual', 'TDOT Roadway Design Guidelines', 'TDOT Multimodal Standard Roadway Drawings Library', 'TDOT ADA Office', 'Bicycle Routes in Tennessee', 'Road Diet Instructional Bulletin', 'Road Diet Questionnaire', 'Multimodal Design Deviation Request', 'TDOT Resurfacing List', 'TN Traffic Laws Relating to Bicycles', and 'Traffic Safety'.

**TN TDOT**  
Department of  
Transportation

Go to TN.gov

Search TDOT

Driver how do I... Business how do I... Government how do I... Find Local Information Find IMPROVE Act Projects Sitemap Index of Services

**Multimodal Transportation Resources Division**

Office of Public Transportation

**Bicycle and Pedestrian Program**

Tennessee Bicycle Laws

Tennessee Pedestrian Laws

Bicycle Routes

Smart Commute

Multimodal Access Grant

Annual and Final Report

Staff

## Bicycle and Pedestrian Program

Sidewalks, bikeways and paths play an important role in providing transportation choices for people across Tennessee, especially those without access to an automobile—children, older adults, tourists, people with disabilities, and low-income individuals. With over 40% of all trips in the United States two miles or less, good walking and bicycling facilities are essential to the continued growth and success of our towns and cities.

Walking and bicycling also provide an opportunity for communities to achieve larger goals such as attracting new businesses, increasing neighborhood safety, reducing traffic congestion and improving air quality. Moreover, there is growing interest in the role walking and bicycling play in public health. Improving walking and bicycling conditions helps everyone lead safe, active and healthy lives. Tennessee can be a great place for walking and bicycling. In addition to a mild climate, Tennessee has many of the ingredients that make walking and bicycling attractive for people of all ages and for all types of trips—commuting, shopping and recreation:

- Small towns and urban neighborhoods
- Quiet rural roads for bicycle touring and recreational riding
- Beautiful state parks, natural areas and landscapes
- Historic trails and greenways

For additional information on TDOT's bicycle/pedestrian program, please email [TDOT.MultimodalPlanning@tn.gov](mailto:TDOT.MultimodalPlanning@tn.gov)

**Useful links**

- [TDOT Bike Ped Plan](#) (pdf)
- [TDOT Multimodal Access Policy](#) (pdf)
- [TDOT Multimodal Project Scoping Manual](#) (pdf)
- [TDOT Roadway Design Guidelines - Multimodal Section 9](#) (pdf)
- [TDOT Multimodal Standard Roadway Drawings Library](#)
- [TDOT ADA Office](#)
- [Bicycle Routes in Tennessee](#) (web link)
- [Road Diet Instructional Bulletin](#) (pdf)
- [Road Diet Questionnaire](#) (Word doc)
- [Multimodal Design Deviation Request](#) (Word doc)
- [TDOT Resurfacing List](#) (web link)
- [TN Traffic Laws Relating to Bicycles: a Handbook for Motorists and Bicyclists](#) (pdf)
- [Traffic Safety](#) (web link)



# Coordination

## We want to hear from you!

Let us know about any projects you have planned on or near the project location including:

- Sidewalk Projects
- Adjacent Roadway Projects
- Utility Projects requiring Pavement Cuts
- In addition, let us know if there are any major events (Festivals, parades, concerts, etc..) that we will need to schedule around.





# Thank You

## TDOT Region 1 Office of Community Transportation



**Troy Ebbert**

Region 1 OCT Planning Supervisor

[Troy.J.Ebbert@tn.gov](mailto:Troy.J.Ebbert@tn.gov)

Cell: (865) 253-1436



**Michelle Christian**

Region 1 OCT Planner

[Michelle.A.Christian@tn.gov](mailto:Michelle.A.Christian@tn.gov)

Cell: (865) 441-1340



**Ronda Sawyer**

Region 1 OCT Planner

[Ronda.J.Sawyer@tn.gov](mailto:Ronda.J.Sawyer@tn.gov)

Cell: 865-410-2861

**Randy Busler**  
TDOT Region 1 Paving Coordinator  
[Randy.Busler@tn.gov](mailto:Randy.Busler@tn.gov)  
(423)-854-5022