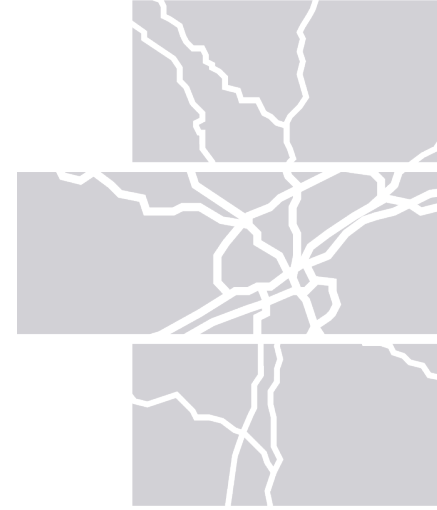


Item 8

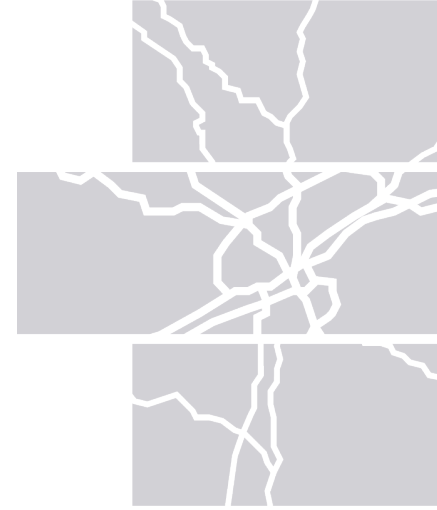
Priority Populations 2022 Update: Socioeconomic Challenges in the Knoxville Region

PRESENTER: AUBREY WEILAND, KNOXVILLE-KNOX COUNTY PLANNING STAFF



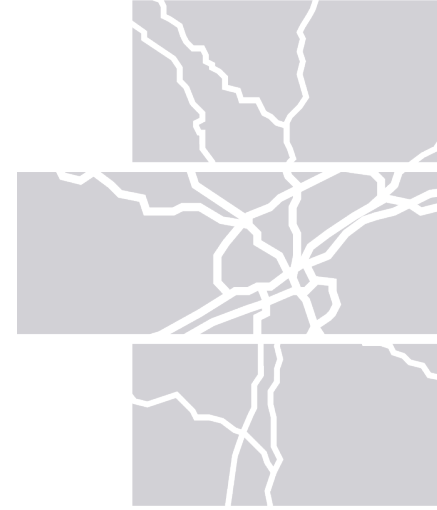
The Priority Populations Dataset

- Quantitatively determine areas of concentrated stressors and areas of high opportunity
- Communities that experience highly concentrated stressors are considered **Priority Populations**



Methodology

- Data for each measure assembled at census tract geography
- Nine-county region (Anderson, Blount, Grainger, Jefferson, Knox, Loudon, Roane, Sevier, and Union counties)
- 27 socioeconomic indicators used
- Indicators organized into four themes
- Scores for each theme get summarized by one composite score – **Priority**



Themes



LIVABILITY

Health, housing suitability, and safety of the built-environment.



MOBILITY

Ability to travel to education, employment, and other daily needs.



OPPORTUNITY

Income, education, and achievability of financial security.



VULNERABILITY

Demographic characteristics that make populations more vulnerable to economic fluctuation.

Metrics

- In the first iteration, indicators were selected based on input from an Equity Team formed for PlanET and from references in Knox County's Health Impact Assessment
- The original collection of indicators has been expanded from 22 in the 2018 vintage to make the Priority Populations model more informative and predictive

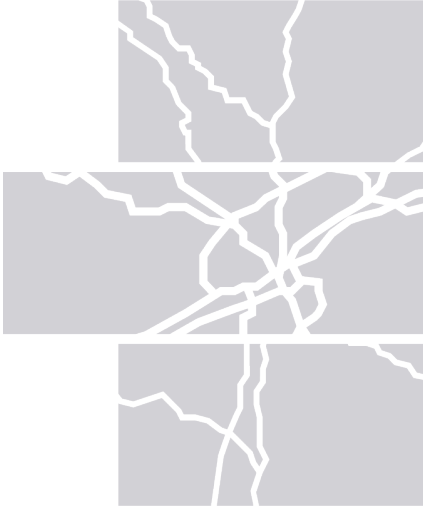
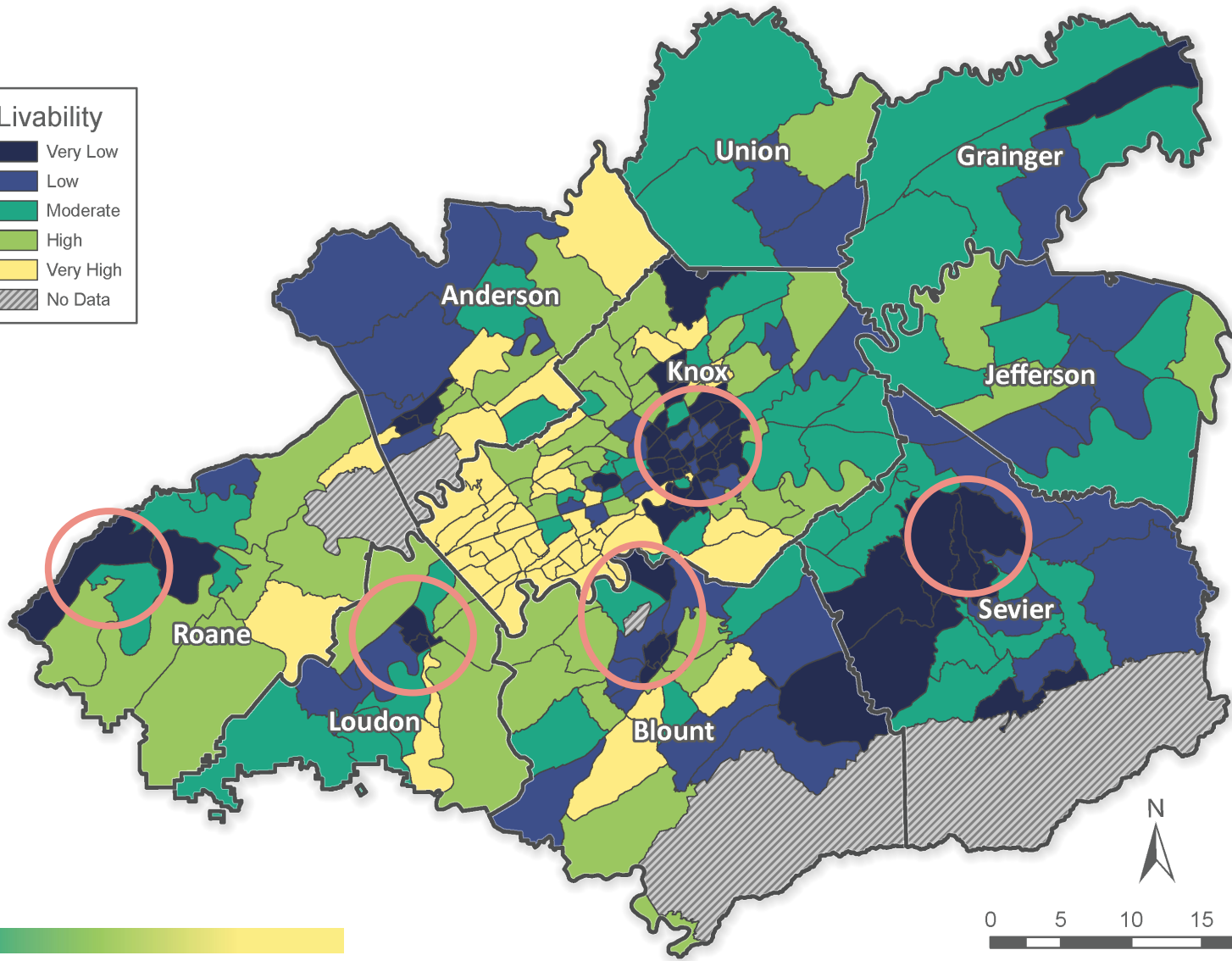
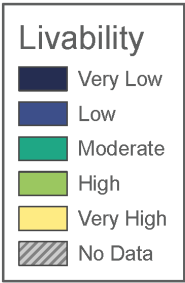
Metrics Examples

Mobility – ability to travel to education, employment, and other daily needs

- Percentage of commuters taking public transit to work.
- Percentage of households with no vehicles available.
- Distance to nearest transit stop (meters).
- Percentage of income spent on transportation by a moderate-income family household.
- Average commute time by workers who do not work from home (minutes).



Livability, 2022



LIVABILITY

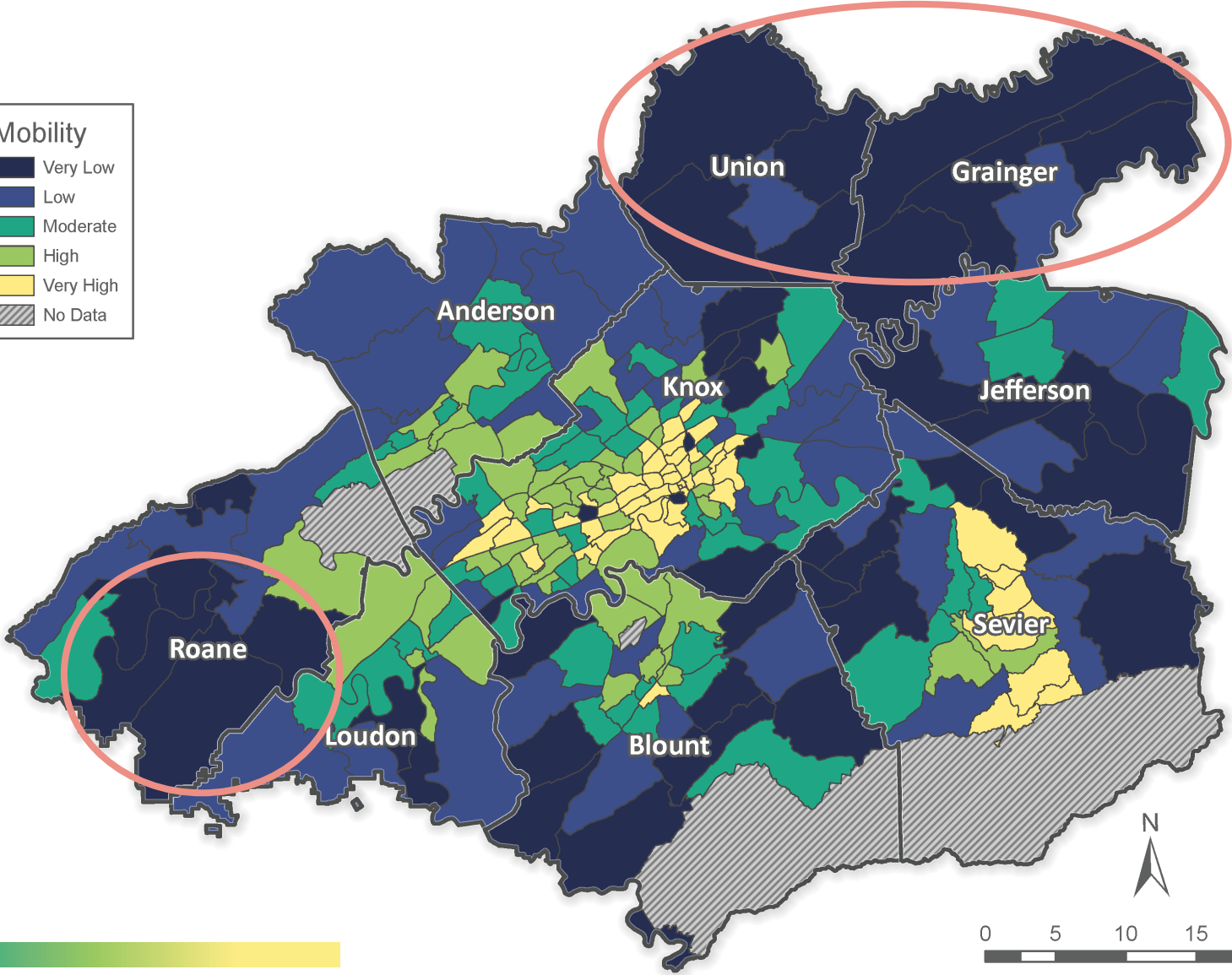
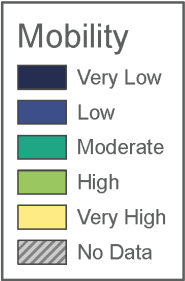
Health, housing suitability,
and safety of the built-
environment.



Concentrated
Stress

Concentrated
Opportunity

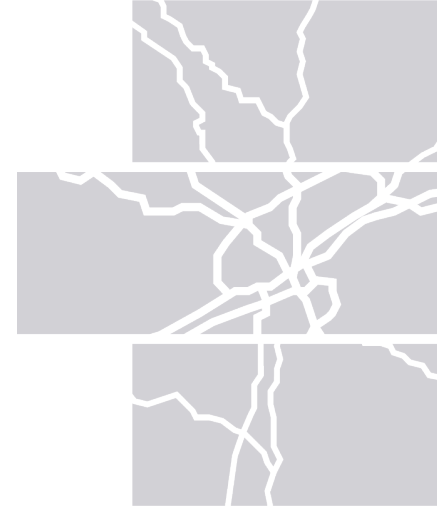
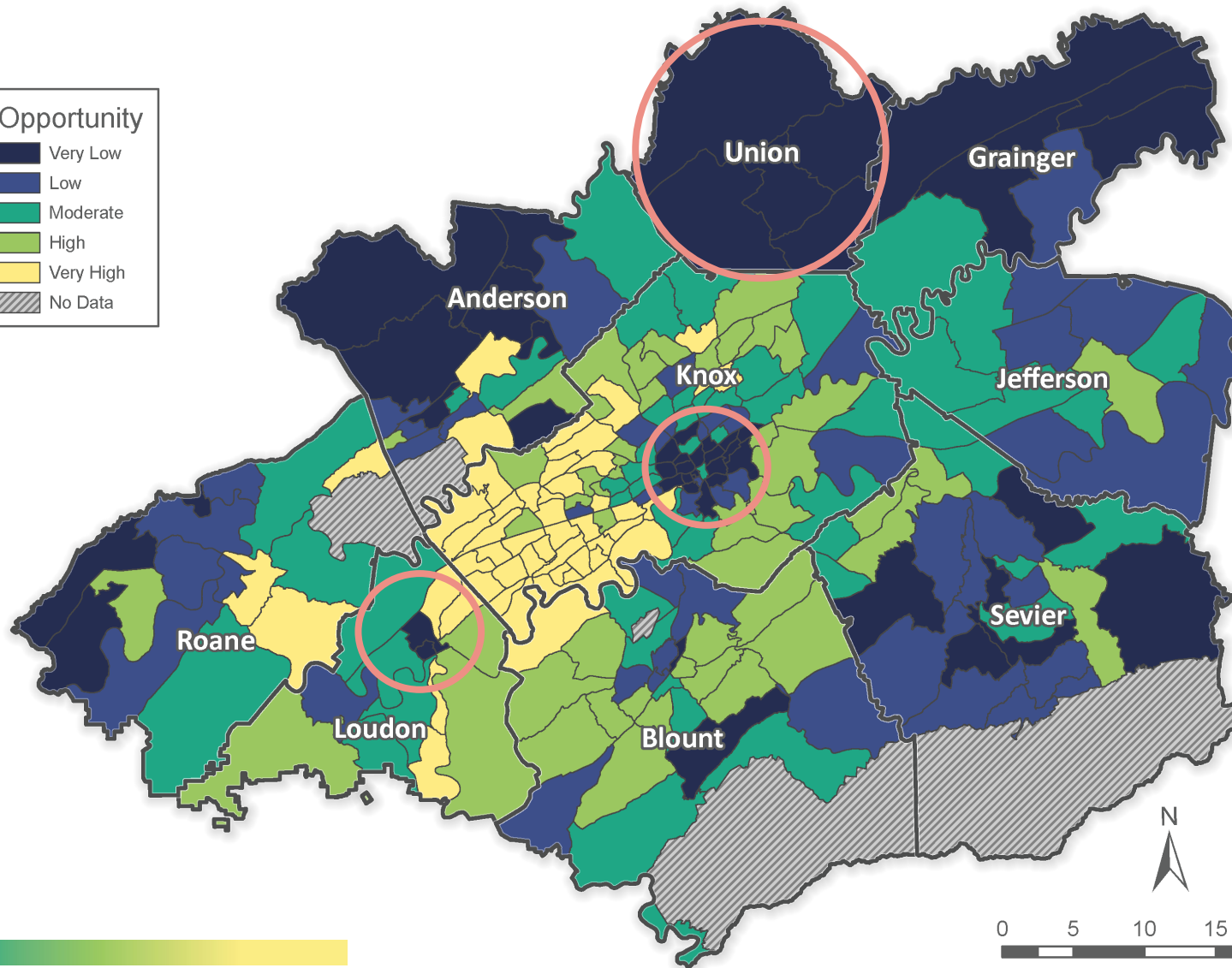
Mobility, 2022



MOBILITY
Ability to travel to education, employment, and other daily needs.



Opportunity, 2022



OPPORTUNITY

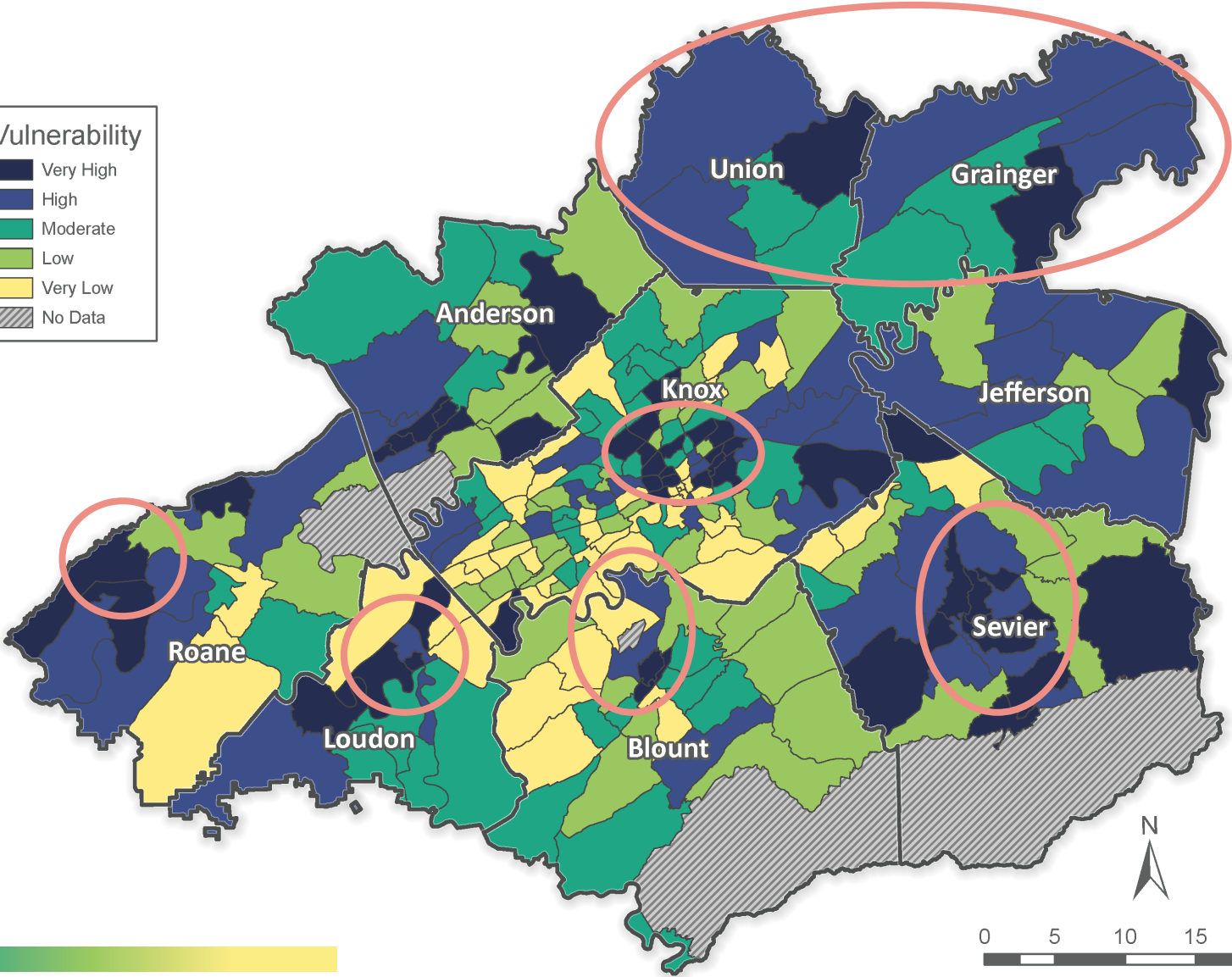
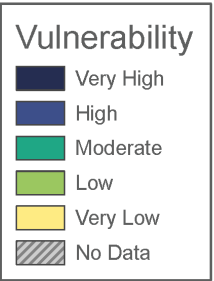
Income, education, and
achievability of financial
security.



Concentrated
Stress

Concentrated
Opportunity

Vulnerability, 2022

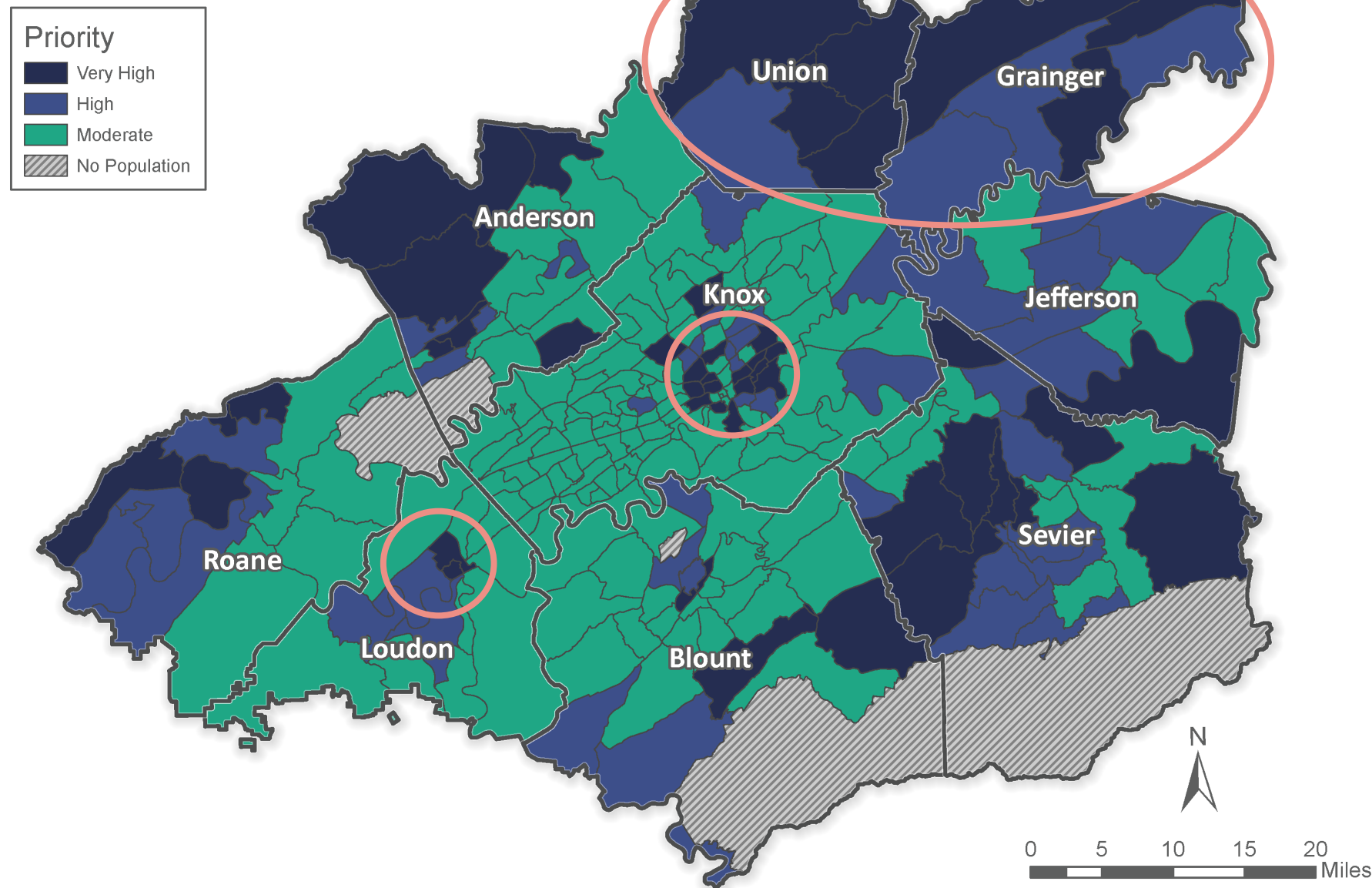


VULNERABILITY

Demographic characteristics that make populations more vulnerable to economic fluctuation.



Priority Populations: Composite Score, 2022



A Deep Dive: The Case of Lenoir City

- Lenoir City is a “Very High Priority” area, scoring very low in Livability and Opportunity, and high to very high in Vulnerability.
- Lenoir City census tracts have negative z-scores in 18 out of 27 socioeconomic indicators, meaning two-thirds of the metrics for this community point to concentrated stress.

NAME	zDisability	zMinority	zLEP	zChildren	zSeniors	zSingleParent	zGrandparents	Vulnerability
Census Tract 602.03, Loudon County, Tennessee	-0.19361	-1.32161	-4.82211	1.40719	-0.86668	0.42648	0.60445	-0.68084
Census Tract 602.04, Loudon County, Tennessee	-0.08829	-0.19546	-0.89145	-0.58824	0.68595	0.21959	-0.70377	-0.22310