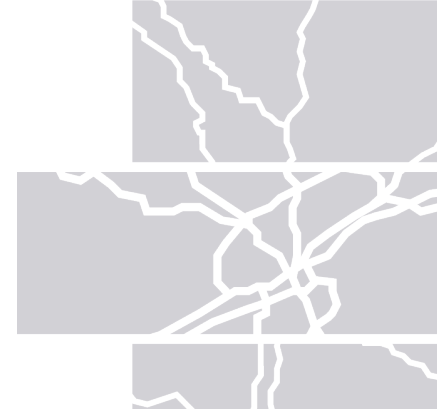


# Item 8

## Update on the Urban Area Boundary from the 2020 Census

PRESENTER: MIKE CONGER, TPO STAFF

# Background on Census Bureau 2020 Decennial Urban Area Delineation



## Primary Criteria:

- Census Block Housing Unit Density
  - Core – 425 HU/square mile
  - Low Density Adjacent Territories – 200 HU/square mile
- Impervious Land Cover

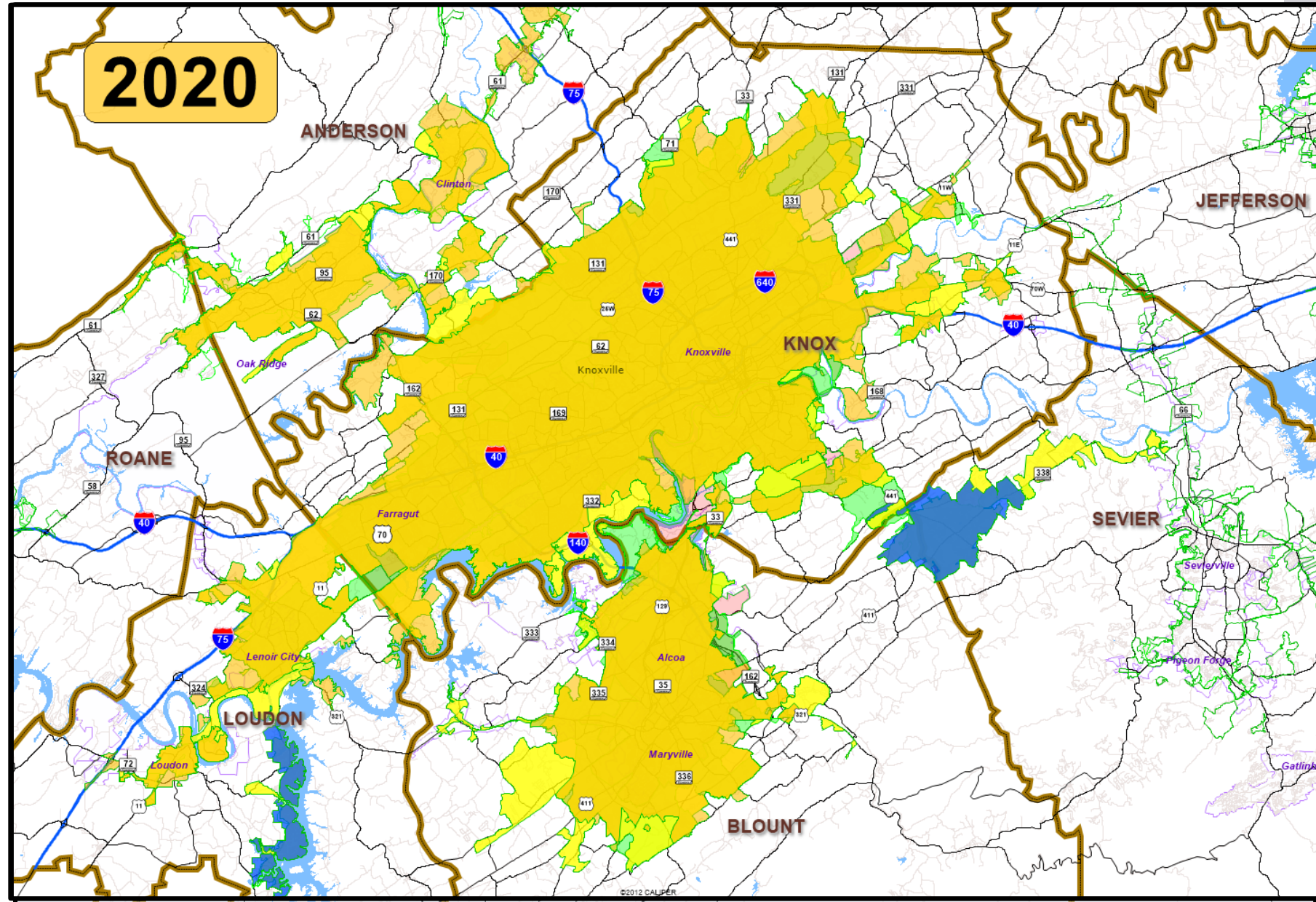
## Changes to Criteria from 2010 to 2020:

- Using housing unit density in place of population density
- Reduction of “Jump” distance from 2.5 miles to 1.5 miles
- No longer include noncontiguous territory from hops and jumps (disconnected pieces)
- Raising minimum threshold for qualification as urban area to 2,000 housing units or at least 5,000 people from previous minimum of 2,500 people

	2010		2020		% Change	
	Pop	Area	Pop	Area	Pop	Area
Bristol	69,501	63.98	70,638	68.70	1.64%	7.38%
Chattanooga	381,112	307.82	398,569	291.70	4.58%	-5.24%
Clarksville	158,655	109.72	200,947	113.10	26.66%	3.08%
Cleveland	66,777	54.65	73,918	55.00	10.69%	0.64%
Jackson	71,880	51.21	72,809	47.70	1.29%	-6.85%
Johnson City	120,415	110.24	128,519	106.00	6.73%	-3.85%
Kingsport	106,571	114.81	98,411	94.10	-7.66%	-18.04%
Knoxville	558,696	442.29	597,257	431.90	6.90%	-2.35%
Memphis	1,060,061	501.10	1,056,190	491.30	-0.37%	-1.96%
Morristown	59,036	59.97	66,539	63.90	12.71%	6.55%
Nashville	969,587	579.36	1,158,642	585.00	19.50%	0.97%

*TN MPO Urban Area Population and Land Area Change 2010-2020*

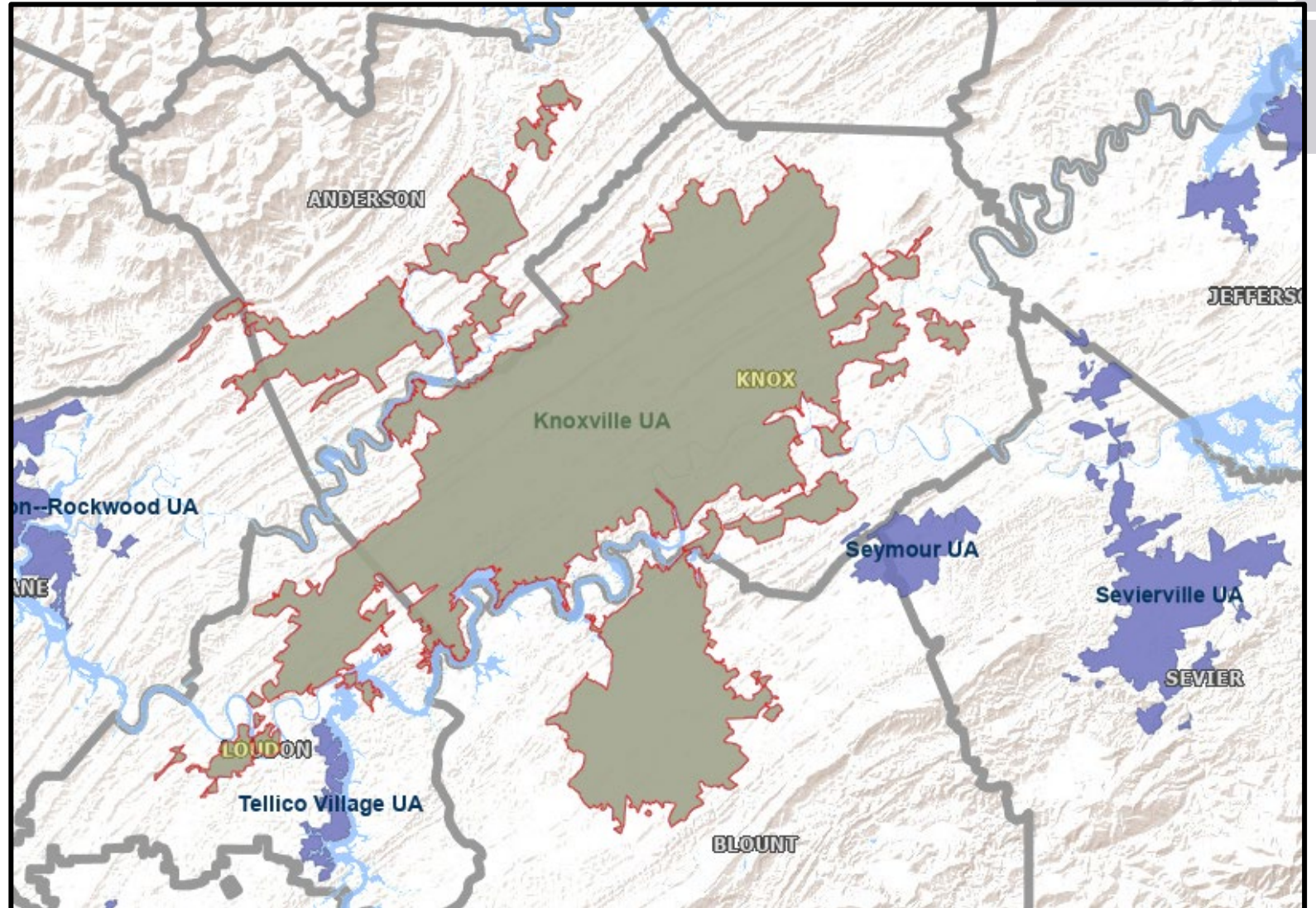
# Knoxville Urban Area 1990 - 2020





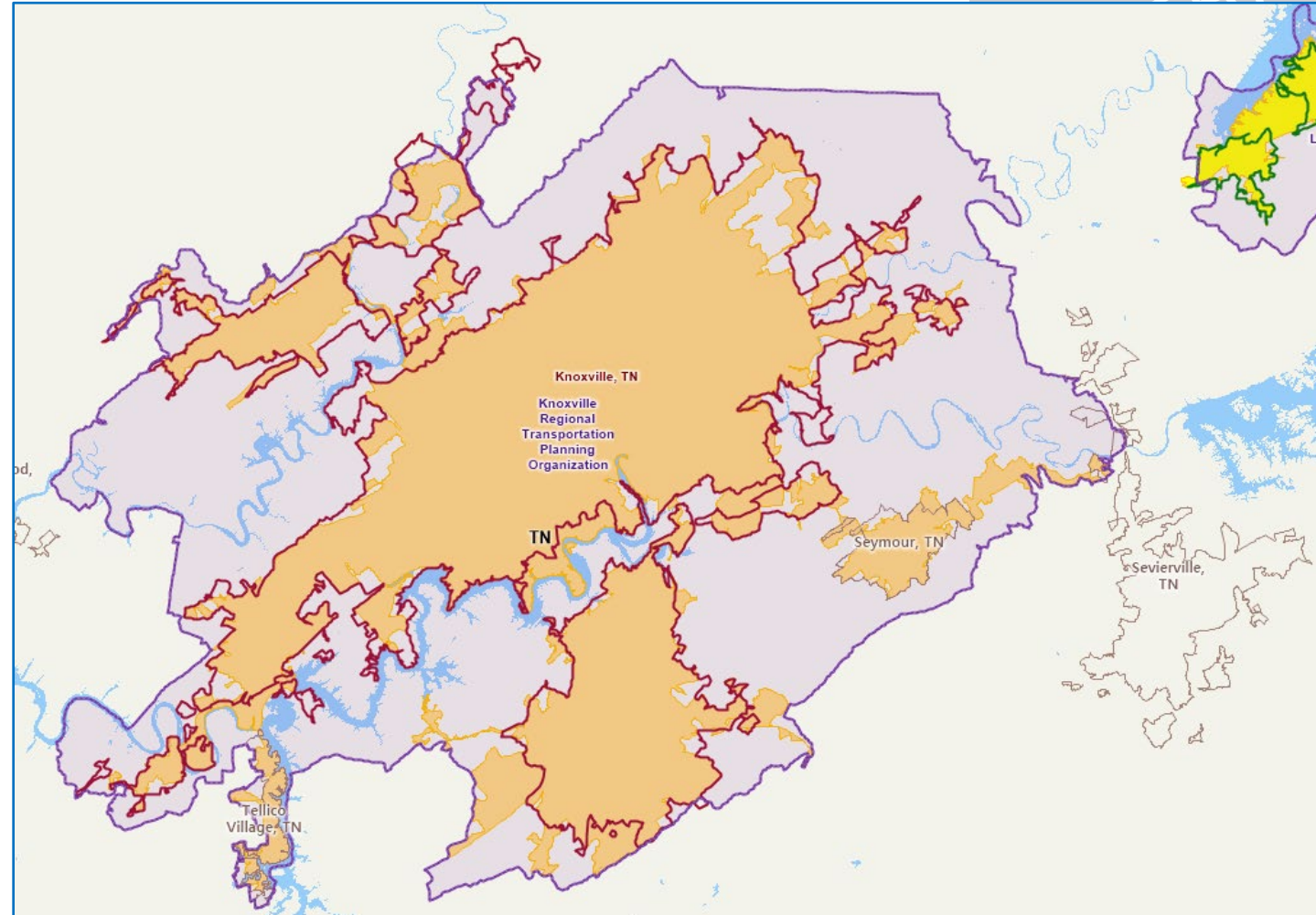
# Knoxville 2020 Urban Area Map

- Net reduction of just over 10 square miles between 2010 and 2020 UA.
- Loss of Seymour (pop. 15,219) and Tellico Village (pop. 7,156) which became independent UA's.
- Population increase from 558,696 to 597,257



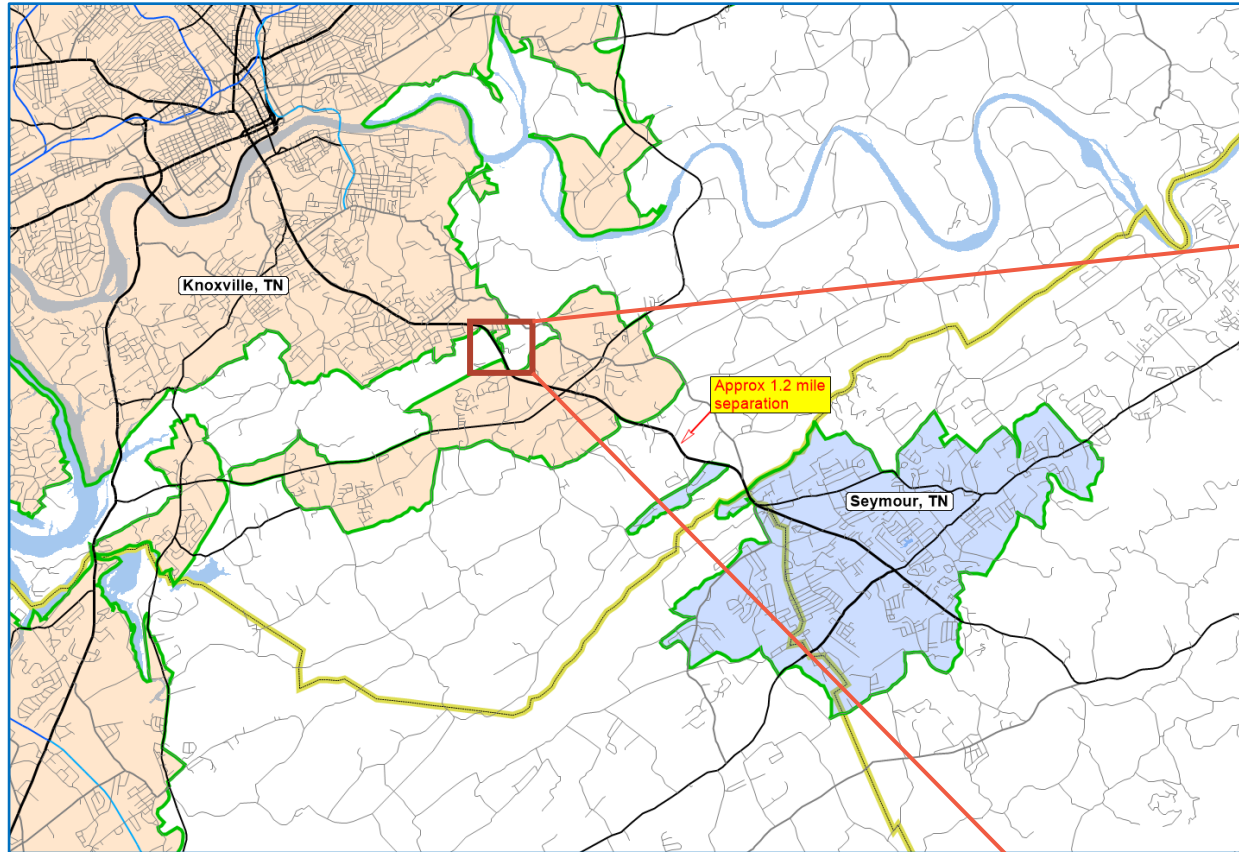
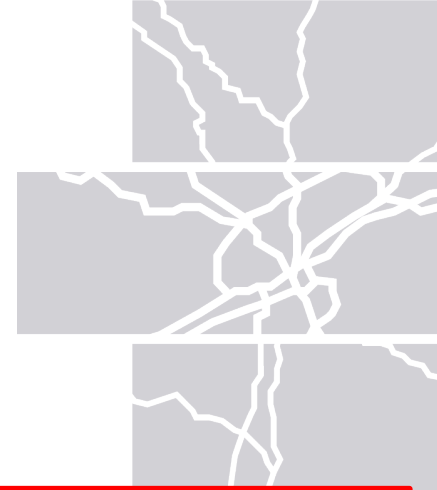
# 2020 Urban Area – TPO Impacts

- Base Urban Area sets the population to be used in federal formula fund allocations
- TPO must include all of urban area in its Planning Area Boundary, plus “additional area anticipated to be urbanized within the next 20 years”
- 1<sup>st</sup> Step is to establish an “Adjusted (Smoothed) Urbanized Area” in coordination with TDOT
  - Adjusted UA determines urban/rural functional classification and provides opportunity for full FC reassessment
- 2<sup>nd</sup> Step is to establish the Metropolitan Planning Area (MPA) Boundary – First time since 1990 that our urban area did not expand to take in new jurisdictions
- Need to discuss pros and cons of continued inclusion of Seymour and Tellico Village in MPA
- Detailed Timeline will be forthcoming – no immediate deadline but will want to establish new MPA for development of Mobility Plan update





# Seymour Connection Detail



# Questions or comments?

Contact:  
[mike.conger@knoxtpo.org](mailto:mike.conger@knoxtpo.org)  
865.215.3813